



# For Sale

## Rare Development Opportunity/Offices

3-6 Frederick Street  
Sunderland  
SR1 1NA

- **DUE TO RELOCATION**
- Rare opportunity to acquire terrace of 4 Victorian properties
- Located within heart of Sunnyside area
- Totalling **6672 ft2 (619.83 m2)**
- Car parking for 9/10 vehicles with scope to increase\*
- May suit conversion to residential etc STP

Also at Portland House  
Belmont Business Park  
Durham DH1 1TW  
Regulated by RICS

### Location

Frederick Street forms part of the main Sunnyside professional area and is predominantly occupied by firms such as solicitors, surveyors, estate agents and insurance brokers together with a small number of niche retailers. In recent years this part of the city centre has been the subject of redevelopment and in particular has seen a number of similar properties reverting from office use back to residential for which they were originally constructed.

### Description

The property comprises 4 interconnecting terraced Victorian buildings constructed circa 1850 having been occupied by a firm of solicitors for a number of years. Each building is arranged over ground, first and second floors with the exception of number 3 Frederick Street which has a full height basement. The main buildings are of brick and slate construction having pitched slated roofs with a series of single, 2 storey and dormer additions to the rear. There is car parking for approximately 9/10 vehicles to the rear of the buildings which could be increased by demolition of some of the rear extensions. The property is shown for identification purposes only on the attached plan.

The properties are offered for sale as our clients are relocating to a newer building within the city centre.

### Accommodation

The property briefly comprises as follows:-

	ft2	m2
<b>Ground Floor</b>		
Offices	3346	310.84
<b>First Floor</b>		
Offices	1909	177.35
<b>Second Floor</b>		
Offices	1263	117.33
<b>Basement (No.3 Only)</b>		
Stores	154	14.31
<b>TOTAL</b>	<b>6672</b>	<b>619.83</b>
<b>Externally</b>		
*The property benefits from approximately 9/10 car parking spaces which could potentially be increased with demolition of rear extensions.		

### Tenure

We are advised the property is Freehold.

### Asking Price

Offers in the region of **£375,000 (three hundred and seventy-five thousand pounds)**. Unconditional offers are preferred.

### Costs

Each party will be responsible for their own Legal Fees incurred in the transaction.

### Viewing

Contact – **Mario Jaconelli** or **Alexa Reavley**

- mario@lofthouseandpartners.co.uk
- alexa@lofthouseandpartners.co.uk
- **0191 5658844**

### VAT

The property is not subject to VAT.

### Rateable Value (RV)

The Valuation Office has confirmed the current Rateable Value is **£35,350** The Uniform Business Rate for the Rates Year 2023/2024 is 49.9p. If necessary, a written request should be made to the Local Authority for confirmation.

### Money Laundering Regulations

In accordance with Anti –Money Laundering Regulations, the Purchaser/Tenant will be required to provide 2 forms of identification together with confirmation of the source of funding.

### Disclaimer

None of the equipment or systems within the premises have been tested by the Agent and it is the responsibility of the Purchaser/Lessee to ensure that they are in working order.

Ref C4153 **EPC** Energy Rating 119/E

### Agents Note

Please note our clients would consider a sale of the property in smaller parts. Numbers 3 and 4 combined and numbers 5 and 6 separately. **Full details on request and available on our website.**



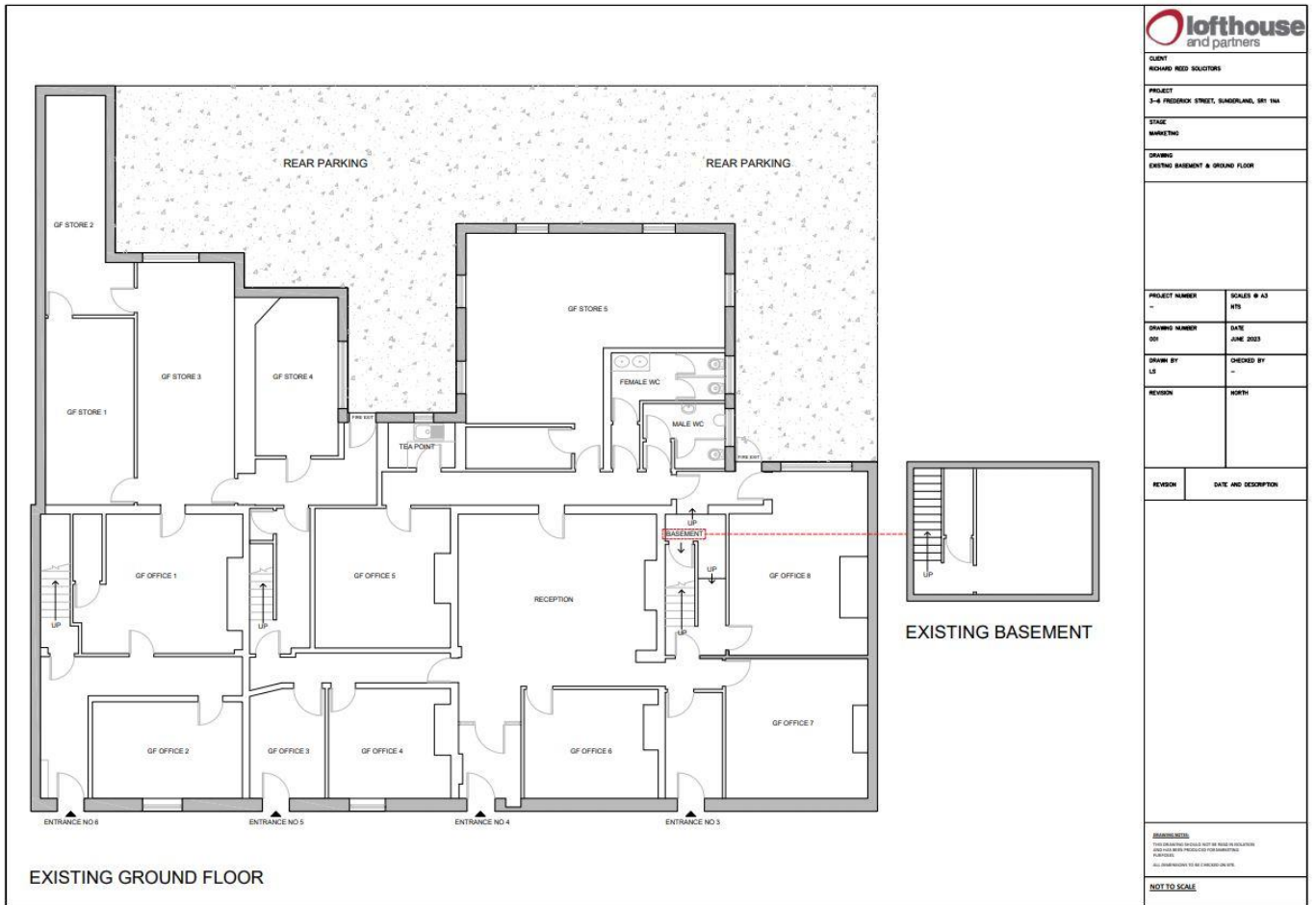
Lofthouse and Partners Limited trading as Lofthouse and Partners Registered in England 4328964 © Registered office 51 Frederick Street, Sunderland, SR1 1NF.  
LOFTHOUSE AND PARTNERS LIMITED (and their joint agents) for themselves and for the Vendor/Lessor of this property for whom they act give Notice that:

1. The information contained in these particulars is intended as a general outline only for the guidance of intending purchasers or tenants and neither Lofthouse and Partners Limited (nor their joint agents) nor the Vendor/Lessor on whose behalf these particulars are provided accept any responsibility for any inaccuracies the particulars may contain and prospective purchasers or tenants must not rely on them as statements of fact or representations and must satisfy themselves by inspection or otherwise as to their accuracy. All floor areas and measurements are approximate.
2. These particulars do not form any part of any offer or contract. They contain in some instances statements of opinion or we have relied on information provided by others. The information should be verified by you on inspection or by your solicitor.
3. Neither Lofthouse and Partners Limited (nor their joint agents) nor any of their employees has any authority, either orally or in writing to make or give or imply any representations or warranty in relation to the property.
4. Unless otherwise stated, all prices and rents are quoted exclusive of VAT.



Lofthouse and Partners Limited trading as Lofthouse and Partners Registered in England 4328964 © Registered office 51 Frederick Street, Sunderland, SR1 1NF. LOFTHOUSE AND PARTNERS LIMITED (and their joint agents) for themselves and for the Vendor/Lessor of this property for whom they act give Notice that:

1. The information contained in these particulars is intended as a general outline only for the guidance of intending purchasers or tenants and neither Lofthouse and Partners Limited (nor their joint agents) nor the Vendor/Lessor on whose behalf these particulars are provided accept any responsibility for any inaccuracies the particulars may contain and prospective purchasers or tenants must not rely on them as statements of fact or representations and must satisfy themselves by inspection or otherwise as to their accuracy. All floor areas and measurements are approximate.
2. These particulars do not form any part of any offer or contract. They contain in some instances statements of opinion or we have relied on information provided by others. The information should be verified by you on inspection or by your solicitor.
3. Neither Lofthouse and Partners Limited (nor their joint agents) nor any of their employees has any authority, either orally or in writing to make or give or imply any representations or warranty in relation to the property.
4. Unless otherwise stated, all prices and rents are quoted exclusive of VAT.



Lofthouse and Partners Limited trading as Lofthouse and Partners Registered in England 4328964 © Registered office 51 Frederick Street, Sunderland, SR1 1NF.  
LOFTHOUSE AND PARTNERS LIMITED (and their joint agents) for themselves and for the Vendor/Lessor of this property for whom they act give Notice that:

1. The information contained in these particulars is intended as a general outline only for the guidance of intending purchasers or tenants and neither Lofthouse and Partners Limited (nor their joint agents) nor the Vendor/Lessor on whose behalf these particulars are provided accept any responsibility for any inaccuracies the particulars may contain and prospective purchasers or tenants must not rely on them as statements of fact or representations and must satisfy themselves by inspection or otherwise as to their accuracy. All floor areas and measurements are approximate.
2. These particulars do not form any part of any offer or contract. They contain in some instances statements of opinion or we have relied on information provided by others. The information should be verified by you on inspection or by your solicitor.
3. Neither Lofthouse and Partners Limited (nor their joint agents) nor any of their employees has any authority, either orally or in writing to make or give or imply any representations or warranty in relation to the property.
4. Unless otherwise stated, all prices and rents are quoted exclusive of VAT.

CLIENT  
RICHARD REED SOLITORS

PROJECT  
3-4 FREDERICK STREET, SANDERLAND, SR1 1NA

STAGE  
MARKETING

DRAWING  
EXISTING FIRST FLOOR

PROJECT NUMBER  
-

SCALE # A3  
1/25

DRAWING NUMBER  
012

DATE  
JUNE 2023

DRAWN BY  
LS

CHECKED BY  
-

REVISION  
-

NOTES  
-

REVISION

DATE AND DESCRIPTION

REVISION

DATE AND DESCRIPTION

REVISION

DATE AND DESCRIPTION

REVISION

DATE AND DESCRIPTION

REVISION

DATE AND DESCRIPTION

REVISION

DATE AND DESCRIPTION

REVISION

DATE AND DESCRIPTION

REVISION

DATE AND DESCRIPTION

REVISION

DATE AND DESCRIPTION

REVISION

DATE AND DESCRIPTION

REVISION

DATE AND DESCRIPTION

REVISION

DATE AND DESCRIPTION

REVISION

DATE AND DESCRIPTION

REVISION

DATE AND DESCRIPTION

REVISION

DATE AND DESCRIPTION

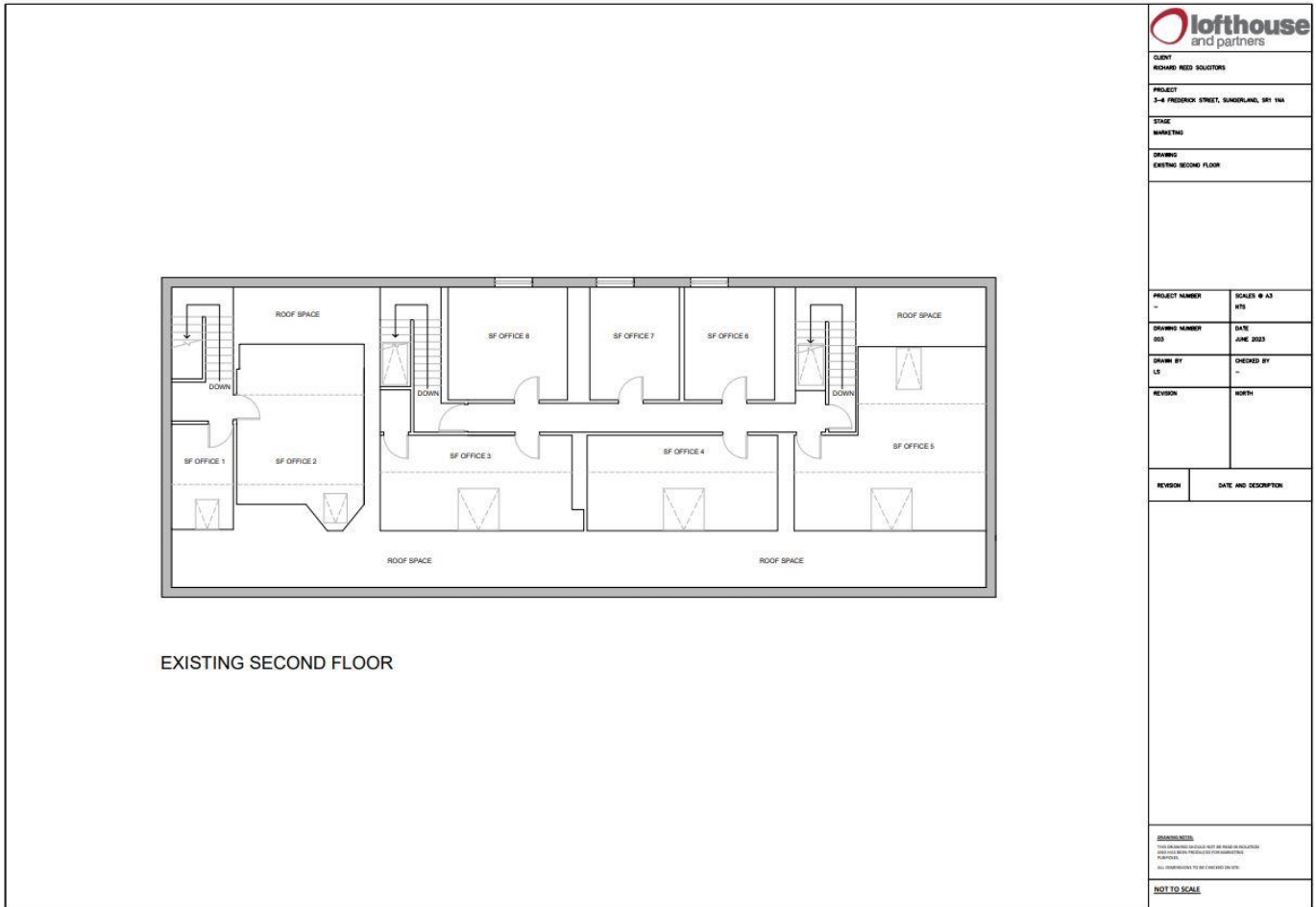



EXISTING FIRST FLOOR

**DISCLAIMER**  
THIS DRAWING IS FOR INFORMATION ONLY AND DOES NOT REPRESENT A CONTRACT. ALL DIMENSIONS TO BE CHECKED ON SITE.  
NOT TO SCALE

Lofthouse and Partners Limited trading as Lofthouse and Partners Registered in England 4328964 © Registered office 51 Frederick Street, Sunderland, SR1 1NF.  
LOFTHOUSE AND PARTNERS LIMITED (and their joint agents) for themselves and for the Vendor/Lessor of this property for whom they act give Notice that:

1. The information contained in these particulars is intended as a general outline only for the guidance of intending purchasers or tenants and neither Lofthouse and Partners Limited (nor their joint agents) nor the Vendor/Lessor on whose behalf these particulars are provided accept any responsibility for any inaccuracies the particulars may contain and prospective purchasers or tenants must not rely on them as statements of fact or representations and must satisfy themselves by inspection or otherwise as to their accuracy. All floor areas and measurements are approximate.
2. These particulars do not form any part of any offer or contract. They contain in some instances statements of opinion or we have relied on information provided by others. The information should be verified by you on inspection or by your solicitor.
3. Neither Lofthouse and Partners Limited (nor their joint agents) nor any of their employees has any authority, either orally or in writing to make or give or imply any representations or warranty in relation to the property.
4. Unless otherwise stated, all prices and rents are quoted exclusive of VAT.



	
CLIENT RICHARD REED SOLUTIONS	
PROJECT 3-4 FREDERICK STREET, SUNDERLAND, SR1 1NA	
STAGE MARKETING	
DRAWING EXISTING SECOND FLOOR	
PROJECT NUMBER -	SCALE A3
DRAWING NUMBER 001	DATE JUNE 2023
DRAWN BY L.S.	CHECKED BY -
REVISION	NORTH
REVISION	DATE AND DESCRIPTION
DISCLAIMERS THIS DOCUMENT IS FOR INFORMATION ONLY AND DOES NOT CONSTITUTE AN OFFER OF INVESTMENT OR A CONTRACT. ALL INFORMATION IS SUBJECT TO CHANGE WITHOUT NOTICE. ALL DIMENSIONS TO BE CHECKED ON SITE.	
<b>NOT TO SCALE</b>	

Lofthouse and Partners Limited trading as Lofthouse and Partners Registered in England 4328964 © Registered office 51 Frederick Street, Sunderland, SR1 1NF. LOFTHOUSE AND PARTNERS LIMITED (and their joint agents) for themselves and for the Vendor/Lessor of this property for whom they act give Notice that:

1. The information contained in these particulars is intended as a general outline only for the guidance of intending purchasers or tenants and neither Lofthouse and Partners Limited (nor their joint agents) nor the Vendor/Lessor on whose behalf these particulars are provided accept any responsibility for any inaccuracies the particulars may contain and prospective purchasers or tenants must not rely on them as statements of fact or representations and must satisfy themselves by inspection or otherwise as to their accuracy. All floor areas and measurements are approximate.
2. These particulars do not form any part of any offer or contract. They contain in some instances statements of opinion or we have relied on information provided by others. The information should be verified by you on inspection or by your solicitor.
3. Neither Lofthouse and Partners Limited (nor their joint agents) nor any of their employees has any authority, either orally or in writing to make or give or imply any representations or warranty in relation to the property.
4. Unless otherwise stated, all prices and rents are quoted exclusive of VAT.